



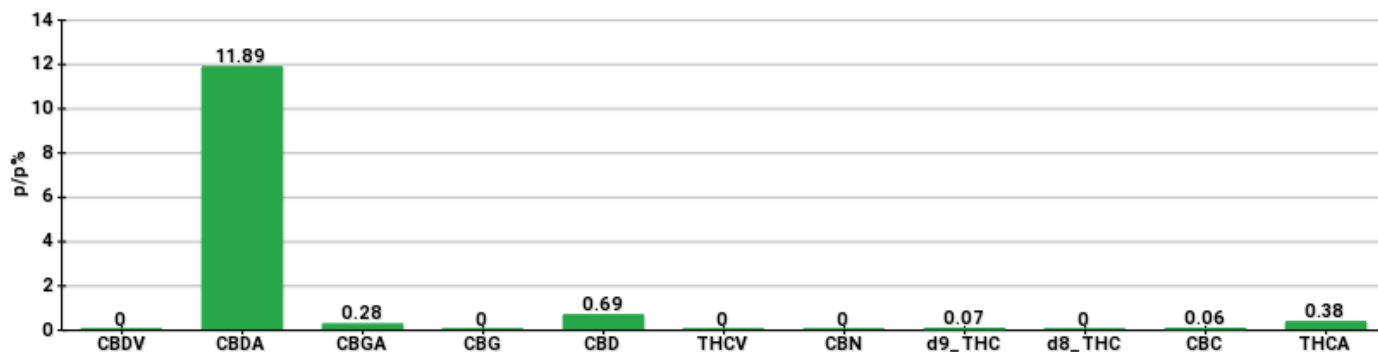
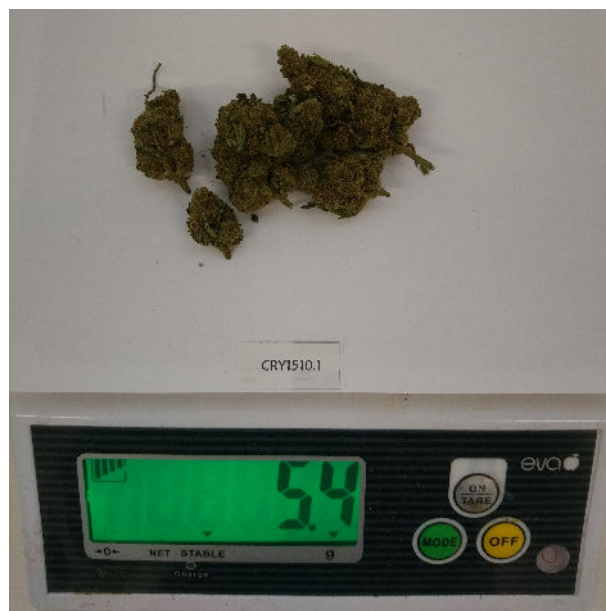
TECHNICAL REPORT

Committente	Crystal srl	Etichetta	L0171
Data accettazione	15/10/2020	Tipologia campione	Infiorescenza
Data analisi	16/10/2020	varietà	Fedora 17
Codice riferimento interno	CRY1510.1	N. Cartellino	F1545C184203B
Metodica analitica	HPLC - HS - Rev.2	Campionamento	a cura del cliente
Lotto			

Note

Parametro	%p/p	Metodo
CBDV	<0.01%	HPLC-UV
CBDA	11.89%	HPLC-UV
CBGA	0.28%	HPLC-UV
CBG	<0.01%	HPLC-UV
CBD	0.69%	HPLC-UV
THCV	<0.01%	HPLC-UV
CBN	<0.01%	HPLC-UV
d9_THC	0.07%	HPLC-UV
d8_THC	<0.01%	HPLC-UV
CBC	0.06%	HPLC-UV
THCA	0.38%	HPLC-UV
CBD TOTALE	11.12%	CALCOLATO
CBG TOTALE	0.25%	CALCOLATO
THC TOTALE	0.41%	CALCOLATO

CAMPIONE ANALIZZATO: Fedora 17(3.00gr)



Pineto

16/10/2020