



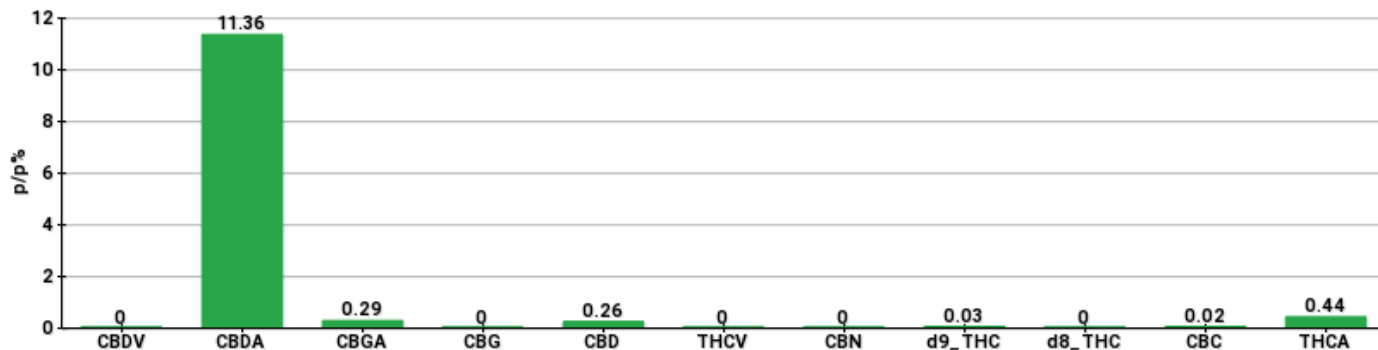
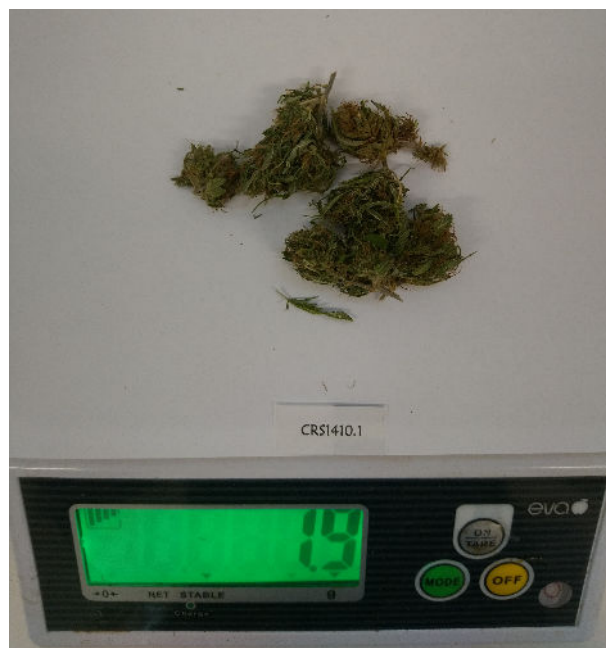
TECHNICAL REPORT

Committente	Crystalfarm S.r.l.	Etichetta	Sherbert
Data accettazione	14/10/2020	Tipologia campione	Infiorescenza
Data analisi	15/10/2020	varietà	Tisza
Codice riferimento interno	CRS1410.1	N. Cartellino	B35054201800001
Metodica analitica	HPLC - HS - Rev.2	Campionamento	a cura del cliente
Lotto	TSZ-L003-05		

Note

Parametro	%p/p	Metodo
CBDV	<0.01%	HPLC-UV
CBDA	11.36%	HPLC-UV
CBGA	0.29%	HPLC-UV
CBG	<0.01%	HPLC-UV
CBD	0.26%	HPLC-UV
THCV	<0.01%	HPLC-UV
CBN	<0.01%	HPLC-UV
d9_THC	0.03%	HPLC-UV
d8_THC	<0.01%	HPLC-UV
CBC	0.02%	HPLC-UV
THCA	0.44%	HPLC-UV
CBD TOTALE	10.23%	CALCOLATO
CBG TOTALE	0.25%	CALCOLATO
THC TOTALE	0.42%	CALCOLATO

CAMPIONE ANALIZZATO: Tisza(5.00gr)



Pineto

15/10/2020