



# TECHNICAL REPORT

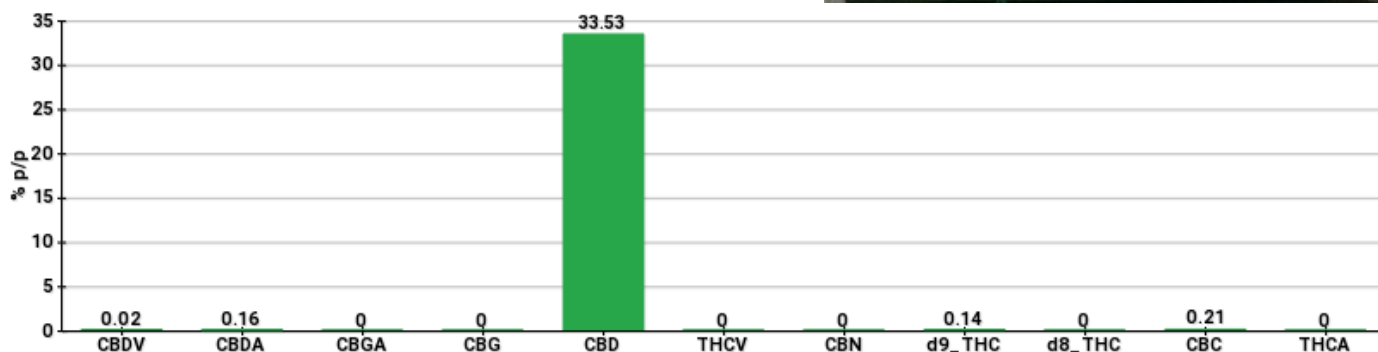
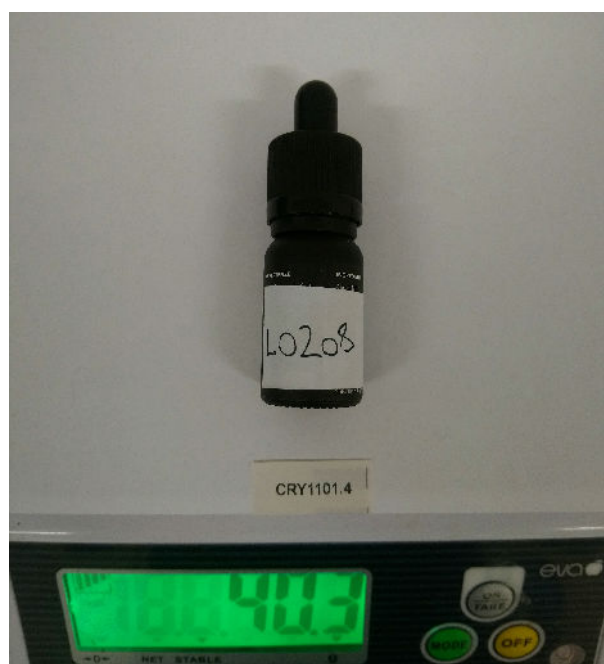


<b>Committente</b>	Crystal srl	<b>Etichetta</b>	L0208
<b>Data accettazione</b>	11/01/2021	<b>Tipologia campione</b>	Semilavorato
<b>Data analisi</b>	11/01/2021	<b>varietà</b>	Kompolti
<b>Codice riferimento interno</b>	CRY1101.4	<b>N. Cartellino</b>	B35052201800001
<b>Metodica analitica</b>	HPLC - HS - Rev.2	<b>Campionamento</b>	a cura del cliente
<b>Lotto</b>			

**Note**

Parametro	% p/p	Metodo
CBDV	0.02%	HPLC-UV
CBDA	0.16%	HPLC-UV
CBGA	<0.01%	HPLC-UV
CBG	<0.01%	HPLC-UV
CBD	33.53%	HPLC-UV
THCV	<0.01%	HPLC-UV
CBN	<0.01%	HPLC-UV
d9_THC	0.14%	HPLC-UV
d8_THC	<0.01%	HPLC-UV
CBC	0.21%	HPLC-UV
THCA	<0.01%	HPLC-UV
<b>CBD TOTALE</b>	<b>33.67%</b>	<b>CALCOLATO</b>
<b>CBG TOTALE</b>	<b>&lt;0.01%</b>	<b>CALCOLATO</b>
<b>THC TOTALE</b>	<b>0.14%</b>	<b>CALCOLATO</b>

CAMPIONE ANALIZZATO: Kompolti(3.00gr)



Pineto 12/01/2021