



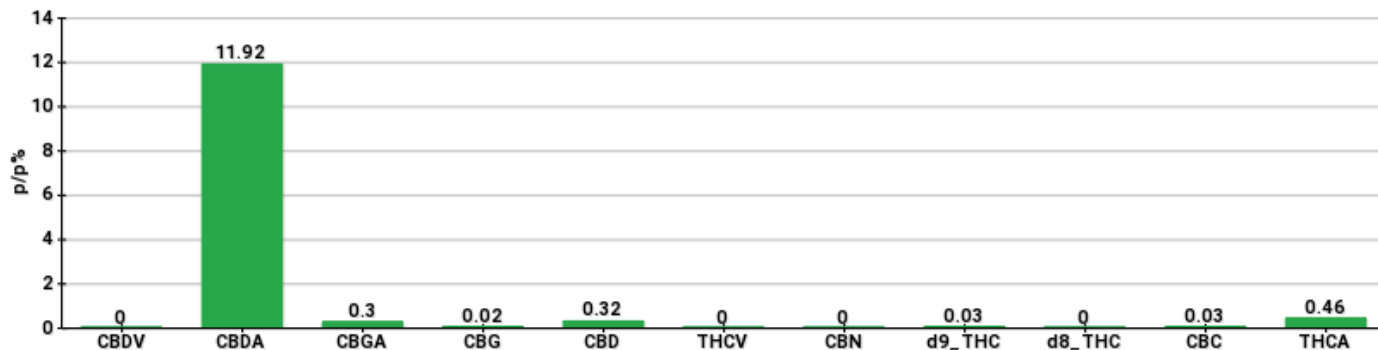
## TECHNICAL REPORT

<b>Committente</b>	Crystal srl	<b>Etichetta</b>	L0194
<b>Data accettazione</b>	16/09/2020	<b>Tipologia campione</b>	Infiorescenza
<b>Data analisi</b>	17/09/2020	<b>Varietà</b>	Finola
<b>Codice riferimento interno</b>	CRY1609.1	<b>N. Cartellino</b>	DE127481147
<b>Metodica analitica</b>	HPLC - HS - Rev.2	<b>Campionamento</b>	a cura del cliente
<b>Lotto</b>	☐		

**Note:**

Parametro	%p/p	Metodo
CBDV	<0.01%	HPLC-UV
CBDA	11.92%	HPLC-UV
CBGA	0.30%	HPLC-UV
CBG	0.02%	HPLC-UV
CBD	0.32%	HPLC-UV
THCV	<0.01%	HPLC-UV
CBN	<0.01%	HPLC-UV
d9_THC	0.03%	HPLC-UV
d8_THC	<0.01%	HPLC-UV
CBC	0.03%	HPLC-UV
THCA	0.46%	HPLC-UV
<b>CBD TOTALE</b>	<b>10.78%</b>	<b>CALCOLATO</b>
<b>CBG TOTALE</b>	<b>0.28%</b>	<b>CALCOLATO</b>
<b>THC TOTALE</b>	<b>0.44%</b>	<b>CALCOLATO</b>

CAMPIONE ANALIZZATO: Kompolti(10.00gr)



Pineto

17/09/2020