

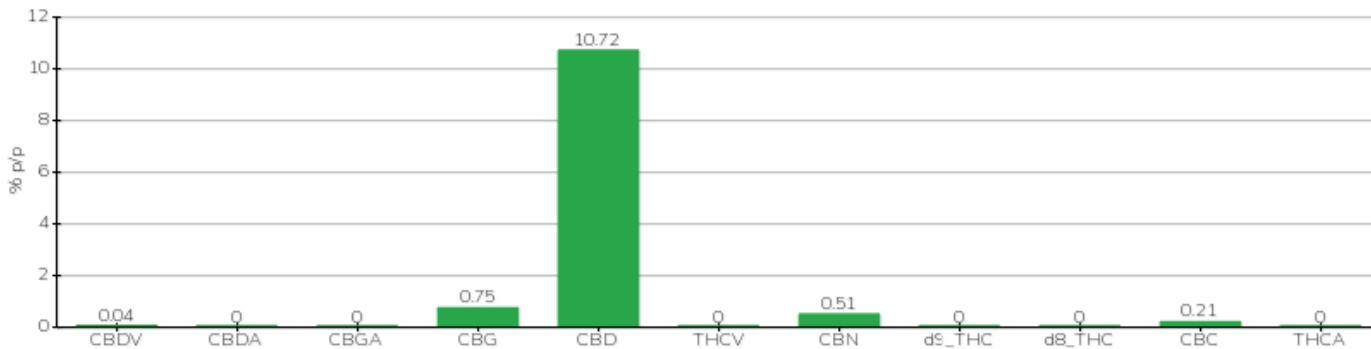
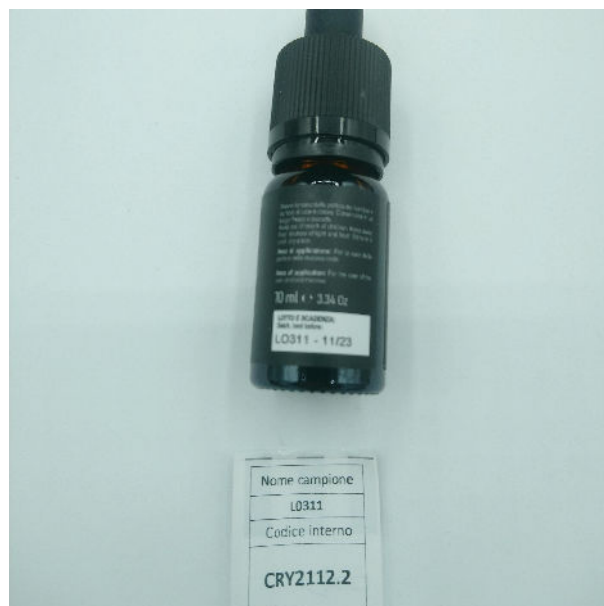
TECHNICAL REPORT

Committente	Crystal srl	Etichetta	L0311
Data accettazione	21/12/2021	Tipologia campione	semilavorato
Data analisi	22/12/2021	varietà	NA
Codice riferimento interno	CRY2112.2	N. Cartellino	NA
Metodica analitica	HPLC - HS - Rev.2	Campionamento	a cura del cliente
Lotto			

Note

Parametro	% p/p	Metodo
CBDV	0.04%	HPLC-UV
CBDA	<0.01%	HPLC-UV
CBGA	<0.01%	HPLC-UV
CBG	0.75%	HPLC-UV
CBD	10.72%	HPLC-UV
THCV	<0.01%	HPLC-UV
CBN	0.51%	HPLC-UV
d9_THC	<0.01%	HPLC-UV
d8_THC	<0.01%	HPLC-UV
CBC	0.21%	HPLC-UV
THCA	<0.01%	HPLC-UV
CBD TOTALE	10.72%	CALCOLATO
CBG TOTALE	0.75%	CALCOLATO
THC TOTALE	<0.01%	CALCOLATO

CAMPIONE ANALIZZATO: NA(5.00gr)



Pineto

29/12/2021