

Email: info@Scienzainfiore.it - PEC: amministrazione@pec.scienzainfiore.it

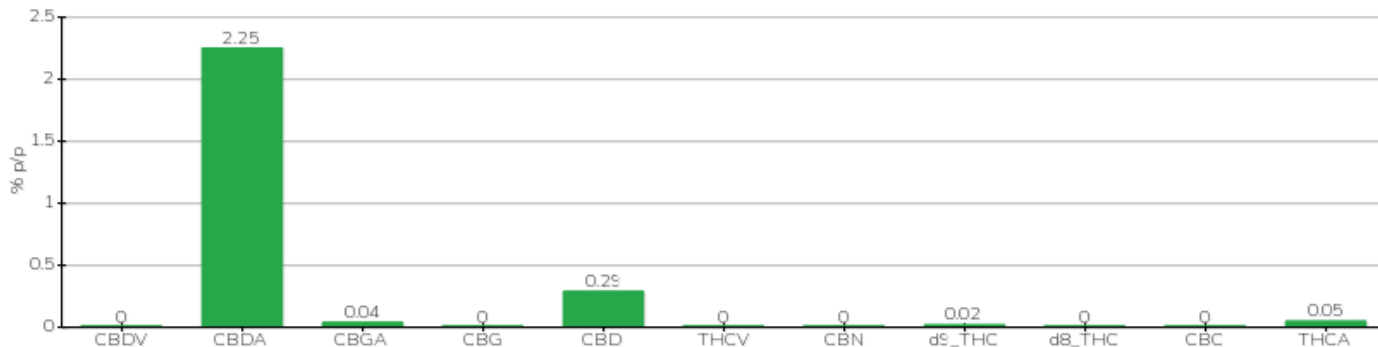
# TECHNICAL REPORT

<b>Committente</b>	Crystalfarm S.r.l.	<b>Etichetta</b>	L0320A
<b>Data accettazione</b>	11/10/2021	<b>Tipologia campione</b>	infiorescenza
<b>Data analisi</b>	11/10/2021	<b>varietà</b>	Finola
<b>Codice riferimento interno</b>	CRS1110.2	<b>N. Cartellino</b>	B36408201800003
<b>Metodica analitica</b>	HPLC - HS - Rev.2	<b>Campionamento</b>	a cura del cliente
<b>Lotto</b>	FNL-L025-02		

**Note**

Parametro	% p/p	Metodo
CBDV	<0.01%	HPLC-UV
CBDA	2.25%	HPLC-UV
CBGA	0.04%	HPLC-UV
CBG	<0.01%	HPLC-UV
CBD	0.29%	HPLC-UV
THCV	<0.01%	HPLC-UV
CBN	<0.01%	HPLC-UV
d9_THC	0.02%	HPLC-UV
d8_THC	<0.01%	HPLC-UV
CBC	<0.01%	HPLC-UV
THCA	0.05%	HPLC-UV
<b>CBD TOTALE</b>	<b>2.27%</b>	<b>CALCOLATO</b>
<b>CBG TOTALE</b>	<b>0.04%</b>	<b>CALCOLATO</b>
<b>THC TOTALE</b>	<b>0.07%</b>	<b>CALCOLATO</b>

CAMPIONE ANALIZZATO: Finola(3.00gr)



Pineto 02/12/2021