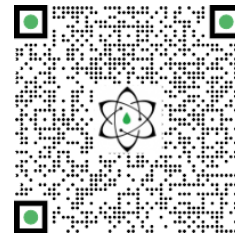




TECHNICAL REPORT

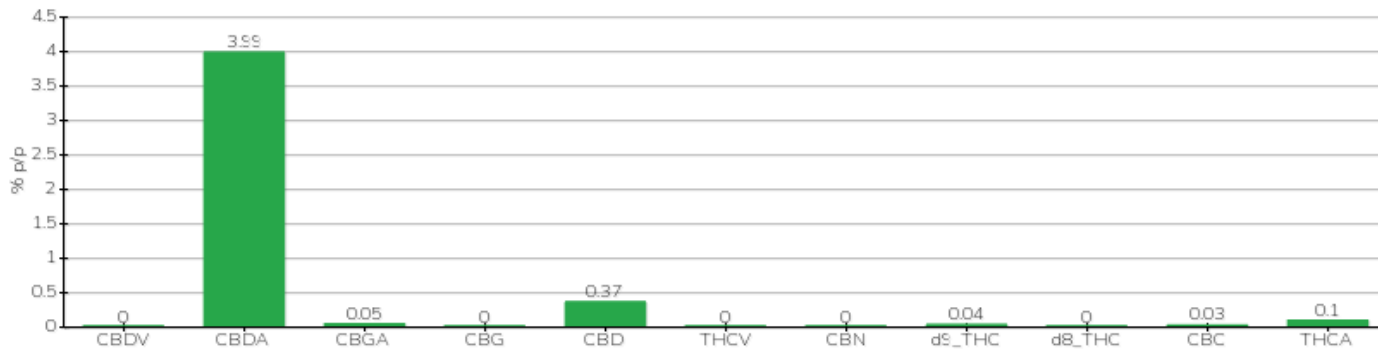
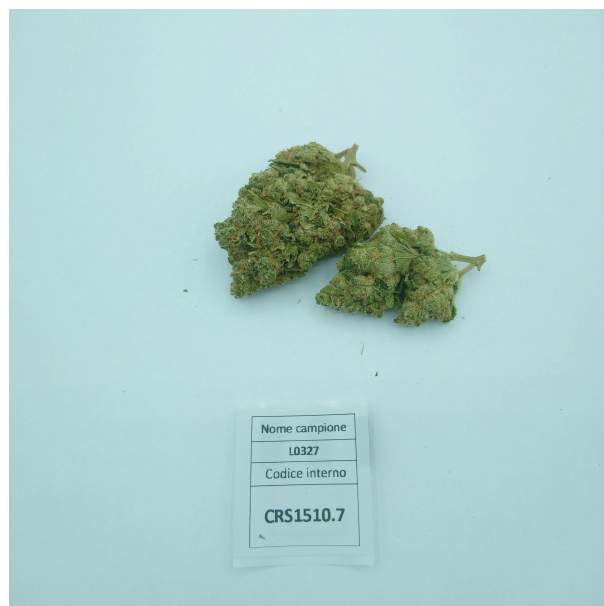


Committente	Crystalfarm S.r.l.	Etichetta	L0327A
Data accettazione	15/10/2021	Tipologia campione	infiorescenza
Data analisi	18/10/2021	varietà	Tisza
Codice riferimento interno	CRS1510.A.7	N. Cartellino	H-13-096/0191
Metodica analitica	HPLC - HS - Rev.2	Campionamento	a cura del cliente
Lotto	TSZ-L005-02		

Note

Parametro	% p/p	Metodo
CBDV	<0.01%	HPLC-UV
CBDA	3.99%	HPLC-UV
CBGA	0.05%	HPLC-UV
CBG	<0.01%	HPLC-UV
CBD	0.37%	HPLC-UV
THCV	<0.01%	HPLC-UV
CBN	<0.01%	HPLC-UV
d9_THC	0.04%	HPLC-UV
d8_THC	<0.01%	HPLC-UV
CBC	0.03%	HPLC-UV
THCA	0.10%	HPLC-UV
CBD TOTALE	3.87%	CALCOLATO
CBG TOTALE	0.05%	CALCOLATO
THC TOTALE	0.13%	CALCOLATO

CAMPIONE ANALIZZATO: Tisza(3.00gr)



Pineto

02/12/2021