

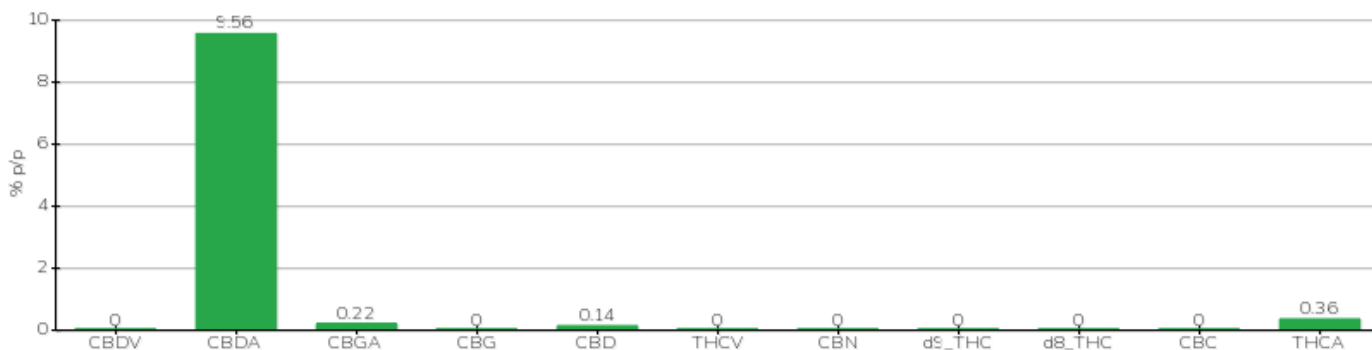
# TECHNICAL REPORT

<b>Committente</b>	Crystal srl	<b>Etichetta</b>	L0362
<b>Data accettazione</b>	15/12/2021	<b>Tipologia campione</b>	infiorescenza
<b>Data analisi</b>	17/12/2021	<b>varietà</b>	Fedora 17
<b>Codice riferimento interno</b>	CRY1512.4	<b>N. Cartellino</b>	F1545E941714
<b>Metodica analitica</b>	HPLC - HS - Rev.2	<b>Campionamento</b>	a cura del cliente
<b>Lotto</b>			

**Note**

Parametro	% p/p	Metodo
CBDV	<0.01%	HPLC-UV
CBDA	9.56%	HPLC-UV
CBGA	0.22%	HPLC-UV
CBG	<0.01%	HPLC-UV
CBD	0.14%	HPLC-UV
THCV	<0.01%	HPLC-UV
CBN	<0.01%	HPLC-UV
d9_THC	<0.01%	HPLC-UV
d8_THC	<0.01%	HPLC-UV
CBC	<0.01%	HPLC-UV
THCA	0.36%	HPLC-UV
<b>CBD TOTALE</b>	<b>8.52%</b>	<b>CALCOLATO</b>
<b>CBG TOTALE</b>	<b>0.20%</b>	<b>CALCOLATO</b>
<b>THC TOTALE</b>	<b>0.31%</b>	<b>CALCOLATO</b>

CAMPIONE ANALIZZATO: Fedora 17(3.00gr)



Pineto

21/12/2021