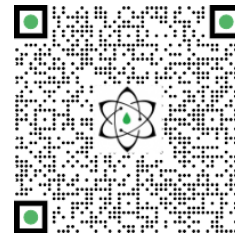




# TECHNICAL REPORT

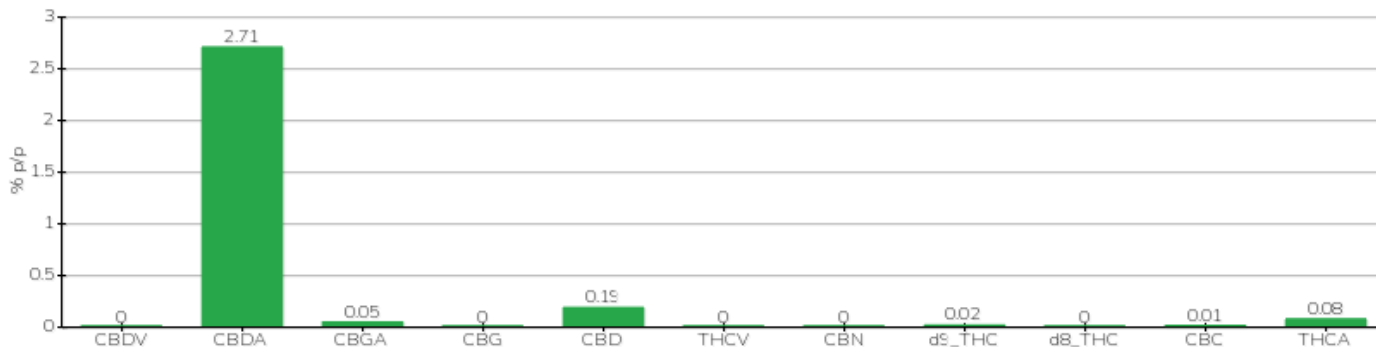


<b>Committente</b>	Crystal srl	<b>Etichetta</b>	L0361A
<b>Data accettazione</b>	10/03/2022	<b>Tipologia campione</b>	infiorescenza
<b>Data analisi</b>	10/03/2022	<b>varietà</b>	Silvana
<b>Codice riferimento interno</b>	CRY1003.5	<b>N. Cartellino</b>	1074100849145
<b>Metodica analitica</b>	HPLC - HS - Rev.2	<b>Campionamento</b>	a cura del cliente
<b>Lotto</b>	SLV-L032-02		

**Note**

Parametro	% p/p	Metodo
CBDV	<0.01%	HPLC-UV
CBDA	2.71%	HPLC-UV
CBGA	0.05%	HPLC-UV
CBG	<0.01%	HPLC-UV
CBD	0.19%	HPLC-UV
THCV	<0.01%	HPLC-UV
CBN	<0.01%	HPLC-UV
d9_THC	0.02%	HPLC-UV
d8_THC	<0.01%	HPLC-UV
CBC	<0.01%	HPLC-UV
THCA	0.08%	HPLC-UV
<b>CBD TOTALE</b>	<b>2.57%</b>	<b>CALCOLATO</b>
<b>CBG TOTALE</b>	<b>0.05%</b>	<b>CALCOLATO</b>
<b>THC TOTALE</b>	<b>0.09%</b>	<b>CALCOLATO</b>

CAMPIONE ANALIZZATO: Silvana(3.00gr)



Pineto

15/03/2022