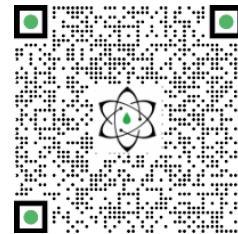




# TECHNICAL REPORT

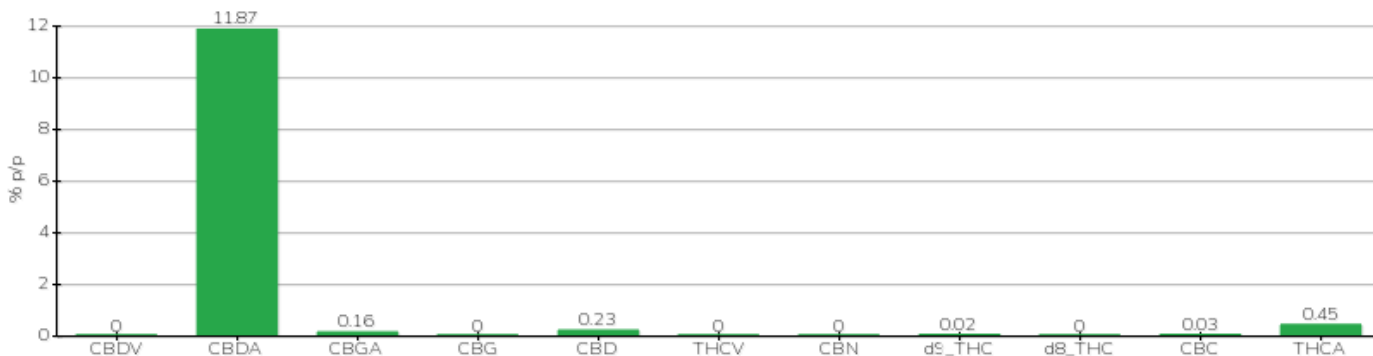


<b>Committente</b>	Crystalfarm S.r.l.	<b>Etichetta</b>	L0356
<b>Data accettazione</b>	19/11/2021	<b>Tipologia campione</b>	infiorescenza
<b>Data analisi</b>	23/11/2021	<b>varietà</b>	Dioica 88
<b>Codice riferimento interno</b>	CRS1911.3	<b>N. Cartellino</b>	A048801
<b>Metodica analitica</b>	HPLC - HS - Rev.2	<b>Campionamento</b>	a cura del cliente
<b>Lotto</b>	DC8-L029-05		

**Note**

Parametro	% p/p	Metodo
CBDV	<0.01%	HPLC-UV
CBDA	11.87%	HPLC-UV
CBGA	0.16%	HPLC-UV
CBG	<0.01%	HPLC-UV
CBD	0.23%	HPLC-UV
THCV	<0.01%	HPLC-UV
CBN	<0.01%	HPLC-UV
d9_THC	0.02%	HPLC-UV
d8_THC	<0.01%	HPLC-UV
CBC	0.03%	HPLC-UV
THCA	0.45%	HPLC-UV
<b>CBD TOTALE</b>	<b>10.63%</b>	<b>CALCOLATO</b>
<b>CBG TOTALE</b>	<b>0.14%</b>	<b>CALCOLATO</b>
<b>THC TOTALE</b>	<b>0.42%</b>	<b>CALCOLATO</b>

CAMPIONE ANALIZZATO: Dioica 88(3.00gr)



Pineto

23/11/2021