

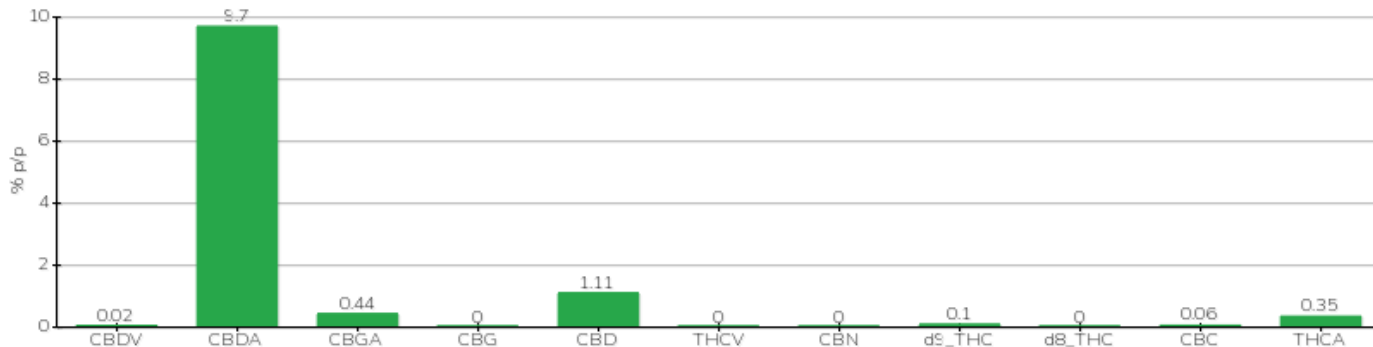
TECHNICAL REPORT

Committente	Crystal srl	Etichetta	BML108
Data accettazione	21/09/2023	Tipologia campione	infiorescenza
Data analisi	21/09/2023	varietà	Fibranova
Codice riferimento interno	CRY2109.A.3	N. Cartellino	B28467202200001
Metodica analitica	HPLC - HS - Rev.2	Campionamento	a cura del cliente
Lotto	□		

Note

Parametro	% p/p	Metodo
CBDV	0.02%	HPLC-UV
CBDA	9.70%	HPLC-UV
CBGA	0.44%	HPLC-UV
CBG	<0.01%	HPLC-UV
CBD	1.11%	HPLC-UV
THCV	<0.01%	HPLC-UV
CBN	<0.01%	HPLC-UV
d9_THC	0.10%	HPLC-UV
d8_THC	<0.01%	HPLC-UV
CBC	0.06%	HPLC-UV
THCA	0.35%	HPLC-UV
CBD TOTALE	9.62%	CALCOLATO
CBG TOTALE	0.38%	CALCOLATO
THC TOTALE	0.40%	CALCOLATO

CAMPIONE ANALIZZATO: Fibranova(3.00gr)



Pineto

22/09/2023