

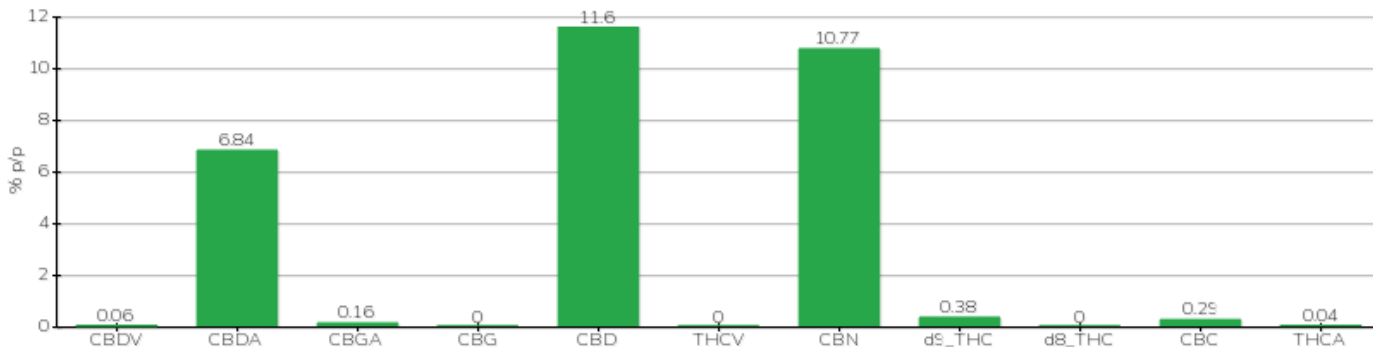
# TECHNICAL REPORT

<b>Committente</b>	Crystal srl	<b>Etichetta</b>	BML046
<b>Data accettazione</b>	18/04/2024	<b>Tipologia campione</b>	bio massa
<b>Data analisi</b>	22/04/2024	<b>varietà</b>	Finola
<b>Codice riferimento interno</b>	CRY1804.2	<b>N. Cartellino</b>	B27733201700001
<b>Metodica analitica</b>	HPLC - HS - Rev.2	<b>Campionamento</b>	a cura del cliente
<b>Lotto</b>			

**Note**

Parametro	% p/p	Metodo
CBDV	0.06%	HPLC-UV
CBDA	6.84%	HPLC-UV
CBGA	0.16%	HPLC-UV
CBG	<0.01%	HPLC-UV
CBD	11.60%	HPLC-UV
THCV	<0.01%	HPLC-UV
CBN	10.77%	HPLC-UV
d9_THC	0.38%	HPLC-UV
d8_THC	<0.01%	HPLC-UV
CBC	0.29%	HPLC-UV
THCA	0.04%	HPLC-UV
<b>CBD TOTALE</b>	<b>17.59%</b>	<b>CALCOLATO</b>
<b>CBG TOTALE</b>	<b>0.14%</b>	<b>CALCOLATO</b>
<b>THC TOTALE</b>	<b>0.41%</b>	<b>CALCOLATO</b>

CAMPIONE ANALIZZATO: Finola(3.00gr)



Pineto

22/04/2024