

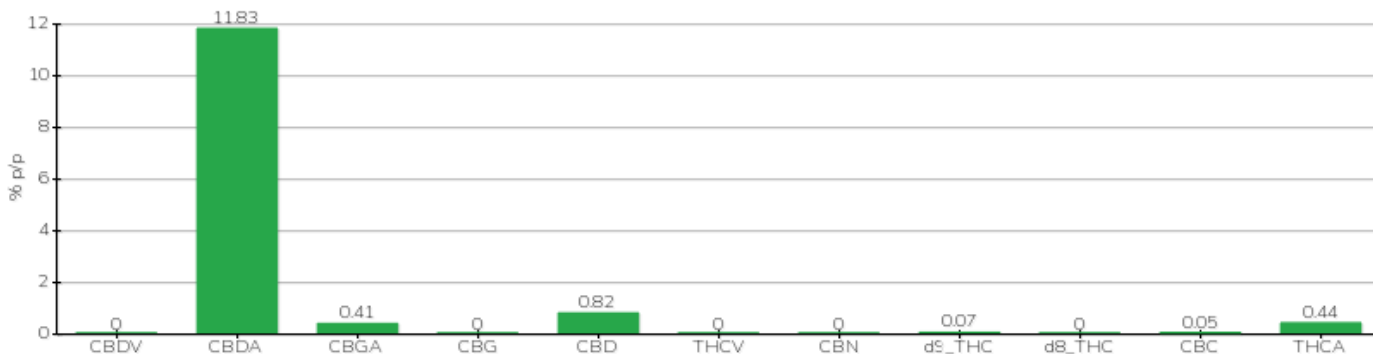
# TECHNICAL REPORT

<b>Committente</b>	Crystal srl	<b>Etichetta</b>	BML115
<b>Data accettazione</b>	18/10/2023	<b>Tipologia campione</b>	infiorescenza
<b>Data analisi</b>	20/10/2023	<b>varietà</b>	CS
<b>Codice riferimento interno</b>	CRY1810.A.2	<b>N. Cartellino</b>	ITAM03517201900002
<b>Metodica analitica</b>	HPLC - HS - Rev.2	<b>Campionamento</b>	a cura del cliente
<b>Lotto</b>			

**Note**

Parametro	% p/p	Metodo
CBDV	<0.01%	HPLC-UV
CBDA	11.83%	HPLC-UV
CBGA	0.41%	HPLC-UV
CBG	<0.01%	HPLC-UV
CBD	0.82%	HPLC-UV
THCV	<0.01%	HPLC-UV
CBN	<0.01%	HPLC-UV
d9_THC	0.07%	HPLC-UV
d8_THC	<0.01%	HPLC-UV
CBC	0.05%	HPLC-UV
THCA	0.44%	HPLC-UV
<b>CBD TOTALE</b>	<b>11.19%</b>	<b>CALCOLATO</b>
<b>CBG TOTALE</b>	<b>0.36%</b>	<b>CALCOLATO</b>
<b>THC TOTALE</b>	<b>0.46%</b>	<b>CALCOLATO</b>

CAMPIONE ANALIZZATO: CS(3.00gr)



Pineto 20/10/2023