

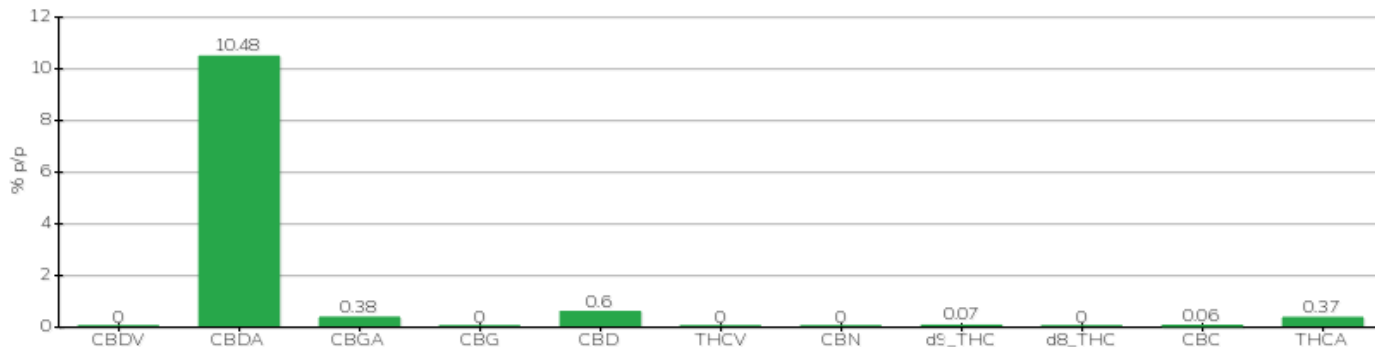
# TECHNICAL REPORT

<b>Committente</b>	Crystal srl	<b>Etichetta</b>	BML119
<b>Data accettazione</b>	26/10/2023	<b>Tipologia campione</b>	infiorescenza
<b>Data analisi</b>	30/10/2023	<b>varietà</b>	Eletta Campana
<b>Codice riferimento interno</b>	CRY2610.1	<b>N. Cartellino</b>	B09465201500002
<b>Metodica analitica</b>	HPLC - HS - Rev.2	<b>Campionamento</b>	a cura del cliente
<b>Lotto</b>			

**Note**

Parametro	% p/p	Metodo
CBDV	<0.01%	HPLC-UV
CBDA	10.48%	HPLC-UV
CBGA	0.38%	HPLC-UV
CBG	<0.01%	HPLC-UV
CBD	0.60%	HPLC-UV
THCV	<0.01%	HPLC-UV
CBN	<0.01%	HPLC-UV
d9_THC	0.07%	HPLC-UV
d8_THC	<0.01%	HPLC-UV
CBC	0.06%	HPLC-UV
THCA	0.37%	HPLC-UV
<b>CBD TOTALE</b>	<b>9.79%</b>	<b>CALCOLATO</b>
<b>CBG TOTALE</b>	<b>0.33%</b>	<b>CALCOLATO</b>
<b>THC TOTALE</b>	<b>0.40%</b>	<b>CALCOLATO</b>

CAMPIONE ANALIZZATO: Eletta Campana(3.00gr)



Pineto 30/10/2023