

Email: info@Scienzainfiore.it - PEC: amministrazione@pec.scienzainfiore.it



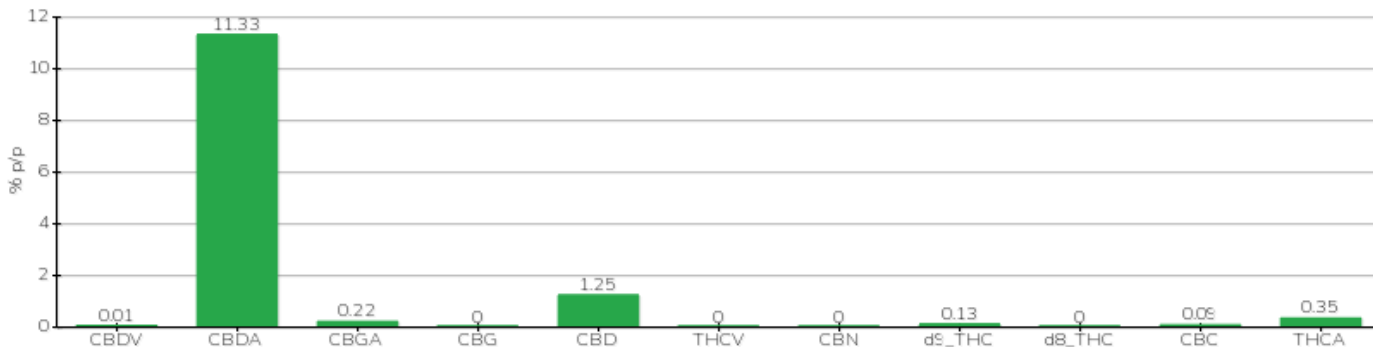
# TECHNICAL REPORT

<b>Committente</b>	Crystal srl	<b>Etichetta</b>	BML018
<b>Data accettazione</b>	09/07/2024	<b>Tipologia campione</b>	infiorescenza
<b>Data analisi</b>	09/07/2024	<b>varietà</b>	Muka 76
<b>Codice riferimento interno</b>	CRY0907.A.3	<b>N. Cartellino</b>	B33716202100001
<b>Metodica analitica</b>	HPLC - HS - Rev.2	<b>Campionamento</b>	a cura del cliente
<b>Lotto</b>			

**Note**

Parametro	% p/p	Metodo
CBDV	<0.01%	HPLC-UV
CBDA	11.33%	HPLC-UV
CBGA	0.22%	HPLC-UV
CBG	<0.01%	HPLC-UV
CBD	1.25%	HPLC-UV
THCV	<0.01%	HPLC-UV
CBN	<0.01%	HPLC-UV
d9_THC	0.13%	HPLC-UV
d8_THC	<0.01%	HPLC-UV
CBC	0.09%	HPLC-UV
THCA	0.35%	HPLC-UV
<b>CBD TOTALE</b>	<b>11.19%</b>	<b>CALCOLATO</b>
<b>CBG TOTALE</b>	<b>0.20%</b>	<b>CALCOLATO</b>
<b>THC TOTALE</b>	<b>0.44%</b>	<b>CALCOLATO</b>

CAMPIONE ANALIZZATO: Muka 76(3.00gr)



Pineto

10/07/2024