

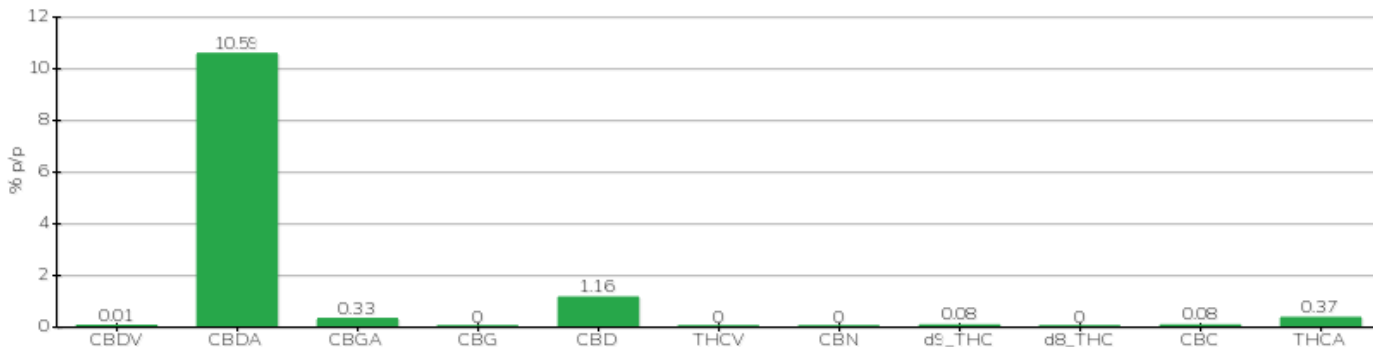
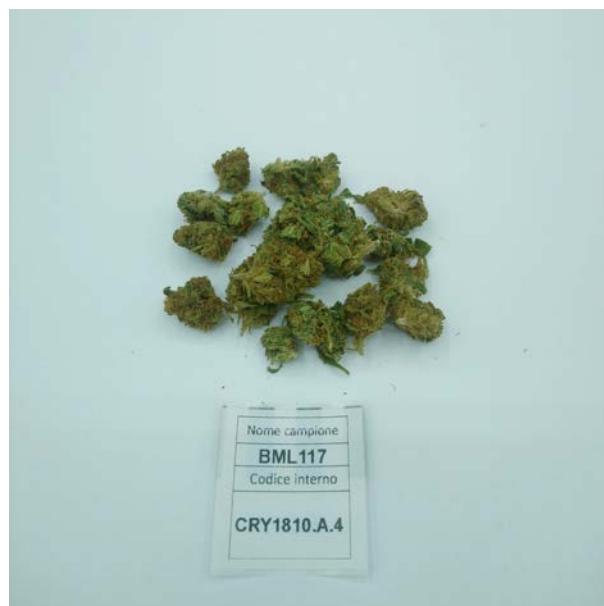
TECHNICAL REPORT

Committente	Crystal srl	Etichetta	BML117
Data accettazione	18/10/2023	Tipologia campione	infiorescenza
Data analisi	20/10/2023	varietà	Finola
Codice riferimento interno	CRY1810.A.4	N. Cartellino	B28613202200001
Metodica analitica	HPLC - HS - Rev.2	Campionamento	a cura del cliente
Lotto			

Note

Parametro	% p/p	Metodo
CBDV	<0.01%	HPLC-UV
CBDA	10.59%	HPLC-UV
CBGA	0.33%	HPLC-UV
CBG	<0.01%	HPLC-UV
CBD	1.16%	HPLC-UV
THCV	<0.01%	HPLC-UV
CBN	<0.01%	HPLC-UV
d9_THC	0.08%	HPLC-UV
d8_THC	<0.01%	HPLC-UV
CBC	0.08%	HPLC-UV
THCA	0.37%	HPLC-UV
CBD TOTALE	10.44%	CALCOLATO
CBG TOTALE	0.29%	CALCOLATO
THC TOTALE	0.41%	CALCOLATO

CAMPIONE ANALIZZATO: Finola(3.00gr)



Pineto 20/10/2023