

Email: info@Scienzainfiore.it - PEC: amministrazione@pec.scienzainfiore.it



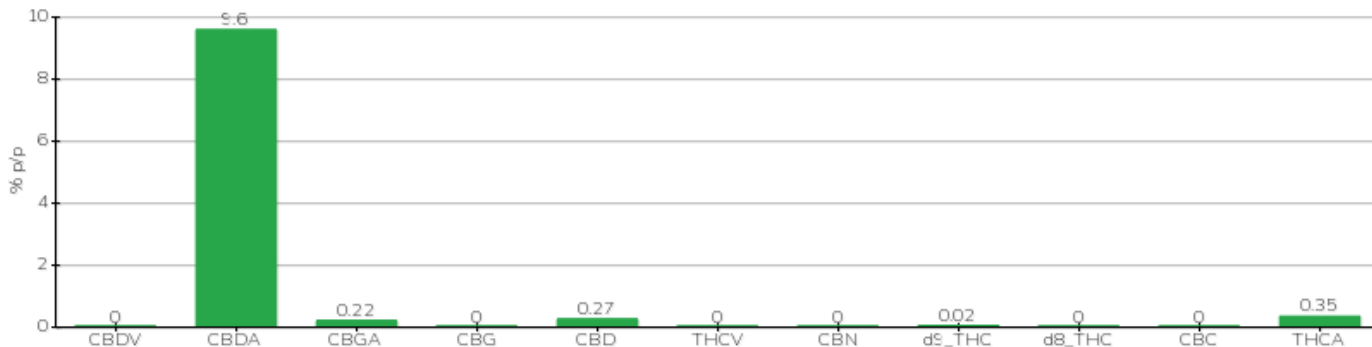
# TECHNICAL REPORT

<b>Committente</b>	Crystal srl	<b>Etichetta</b>	BML136
<b>Data accettazione</b>	01/12/2023	<b>Tipologia campione</b>	infiorescenza
<b>Data analisi</b>	05/12/2023	<b>varietà</b>	Carmagnola
<b>Codice riferimento interno</b>	CRY0112.3	<b>N. Cartellino</b>	B28848202200001
<b>Metodica analitica</b>	HPLC - HS - Rev.2	<b>Campionamento</b>	a cura del cliente
<b>Lotto</b>			

**Note**

Parametro	% p/p	Metodo
CBDV	<0.01%	HPLC-UV
CBDA	9.60%	HPLC-UV
CBGA	0.22%	HPLC-UV
CBG	<0.01%	HPLC-UV
CBD	0.27%	HPLC-UV
THCV	<0.01%	HPLC-UV
CBN	<0.01%	HPLC-UV
d9_THC	0.02%	HPLC-UV
d8_THC	<0.01%	HPLC-UV
CBC	<0.01%	HPLC-UV
THCA	0.35%	HPLC-UV
<b>CBD TOTALE</b>	<b>8.69%</b>	<b>CALCOLATO</b>
<b>CBG TOTALE</b>	<b>0.19%</b>	<b>CALCOLATO</b>
<b>THC TOTALE</b>	<b>0.33%</b>	<b>CALCOLATO</b>

CAMPIONE ANALIZZATO: Carmagnola(3.00gr)



Pineto 05/12/2023