

Email: info@Scienzainfiore.it - PEC: amministrazione@pec.scienzainfiore.it



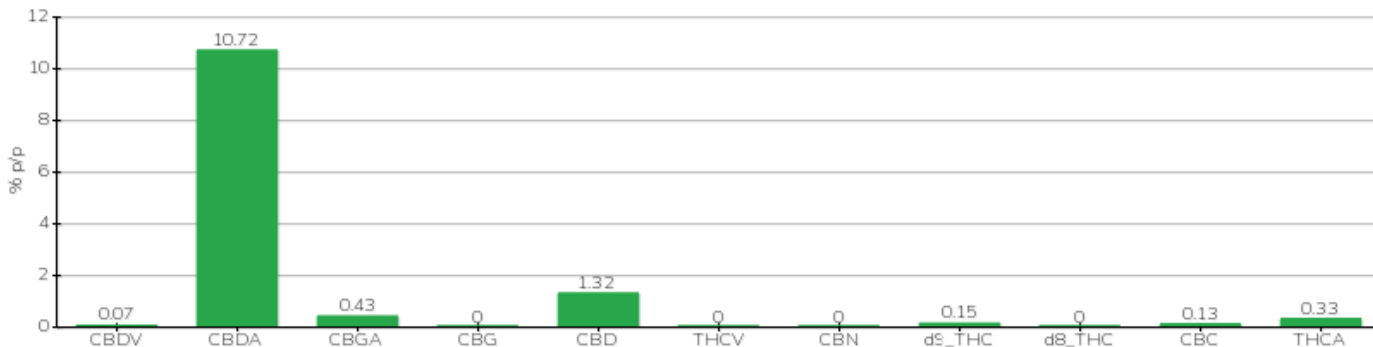
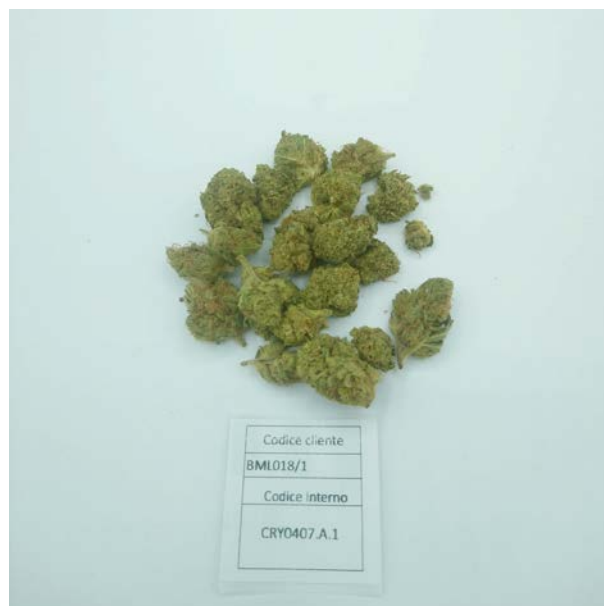
TECHNICAL REPORT

Committente	Crystal srl	Etichetta	BML018/1
Data accettazione	04/07/2024	Tipologia campione	infiorescenza
Data analisi	04/07/2024	varietà	Muka 76
Codice riferimento interno	CRY0407.A.1	N. Cartellino	B33716202100001
Metodica analitica	HPLC - HS - Rev.2	Campionamento	a cura del cliente
Lotto			

Note

Parametro	% p/p	Metodo
CBDV	0.07%	HPLC-UV
CBDA	10.72%	HPLC-UV
CBGA	0.43%	HPLC-UV
CBG	<0.01%	HPLC-UV
CBD	1.32%	HPLC-UV
THCV	<0.01%	HPLC-UV
CBN	<0.01%	HPLC-UV
d9_THC	0.15%	HPLC-UV
d8_THC	<0.01%	HPLC-UV
CBC	0.13%	HPLC-UV
THCA	0.33%	HPLC-UV
CBD TOTALE	10.72%	CALCOLATO
CBG TOTALE	0.37%	CALCOLATO
THC TOTALE	0.44%	CALCOLATO

CAMPIONE ANALIZZATO: Muka 76(3.00gr)



Pineto

08/07/2024